

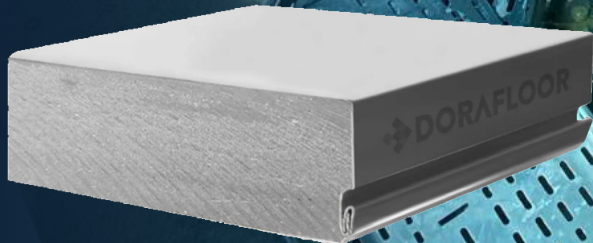
# DF-CS-EN

## Encapsulated Calcium Sulphate Core Panels

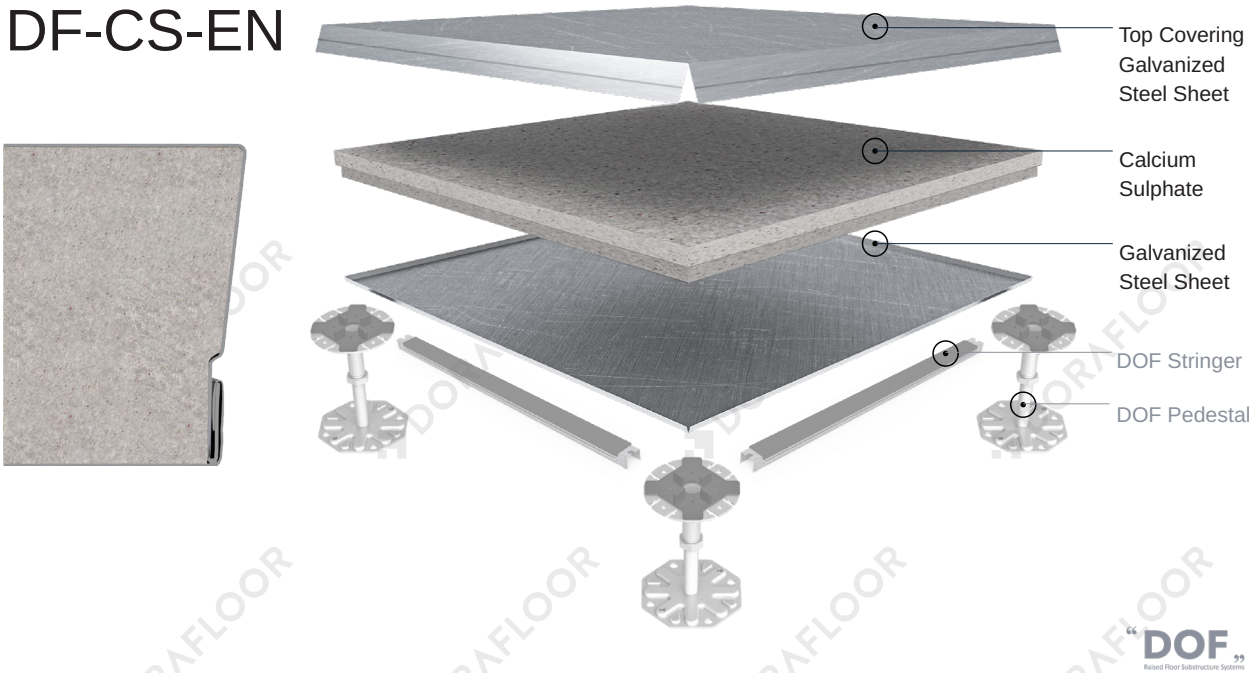
Encapsulated panels are produced by covering galvanized steel on the bottom, top, and edges. With the joint system we have developed it provides durability and long life by wrapping the panel at the maximum level. The panels are relatively easy to install and provide flexibility for future office arrangements. It provides convenient space for electrical cables, data cables, fire installations, ventilation ducts, and sockets. Thanks to its modular structure, any renovation or change can be made easily. It offers architects freedom in design as it allows carpet tile and LVT application.

Offices and Commercial Spaces, Educational Institutions, Healthcare Facilities, Airports, Industrial Facilities, Retail Stores and Shopping Malls

Different finishing options such as LVT, rubber, carpet tiles, and laminate can be applied on the galvanized steel encapsulated panel.



DF-CS-EN



Advantages Of Calcium Sulphate Panels :

- High Load Capacity
- High Water Resistance
- Excellent Acoustic Values
- Environmentally Friendly and Recyclable
- EN 12825 Standards
- A1 Class Fire Resistance
- Aesthetic Variety
- Easy Installation and Removal



DF-CS-EN Panels :

Thickness & Weight : .....30 mm / ~ 17,8 - 18,3 kg  
 Density : .....~ 1694,44 kg/m<sup>3</sup>  
 Panel Size : .....600mm x 600mm x 30 mm  
 Core Material : .....29 mm calcium sulphate core

System Sound Performance :

Airborne Insulation Dn,f,w (C;Ctr) : .....45 dB  
 Impact Insulation Ln,f,w (CI) : .....66 dB  
 Walking Sound Insulation Lw : .....55 dB

System Performance :

Ultimate Load : .....in excess of 13.300 N  
 Concentrated Load : .....in excess of 4.450 N

Panel Fire Performance :

Reaction : .....A1 Class according to EN 13501-1  
 Resistance : .....REI90

Type	Core Thickness	Concentrated Load (deflection = 2 mm)			Impact Load	Ultimate Load	Uniform Load	Flatness	Vertical
	mm	lb	N	kg					
DF-CS-EN	29	≥1000	≥4450	≥450	670	13300	23000	≤0,2	≤0,2